

Features and benefits:



ONE CAN REPLACES 25 KG OF MORTAR - SAVES TIME AND REDUCES THE INSULATION WEIGHT MADE COMPARED WITH TRADITIONAL METHODS

ONE CAN IS ENOUGH TO COVER 8-12 M² OF INSULATED SURFACE - HIGHLY EFFICIENT

EXCELLENT ADHESION TO COMMON BUILDING SUBSTRATES AND INSULATING MATERIALS

WORKS AT LOW TEMPERATURES (UP TO -5°C) – LONGER WORKING, SEASONABLE APPLICATION

HIGH INITIAL FORCE & EXCELLENT INSULATION - DOES NOT CREATE THERMAL OR ACOUSTIC BRIDGES

APPLICATIONS

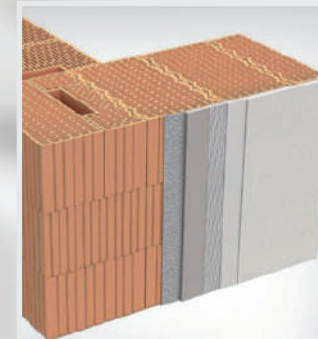
Thin Bed Mortar PU based, is designed for: Internal and External walls load-bearing & partition walls of:

- Aerated Concrete
- Silicate Blocks
- Hollow Ceramic

High dimensional tolerance class TLMB (Flatness/height deviation not larger than 3 mm per running meter)

Also excellent adhesion to typical construction materials, such as:

- Cellular concrete blocks
- Ceramic bricks
- Hollow blocks
- Concrete
- Acrylic and mineral plasters
- Wood
- Metal
- Foamed polystyrene
- PVC and rigid PUR foams



Scan QR code to see more:



RAWLPLUG LTD.
Skibo Drive
Thornliebank Industrial Estate
Glasgow G46 8JR

tel: +44 (0) 141 638 7961
fax: +44 (0) 141 638 7397

email: rawlinfo@rawlplug.co.uk
web: www.rawlplug.co.uk

RAWLPLUG®



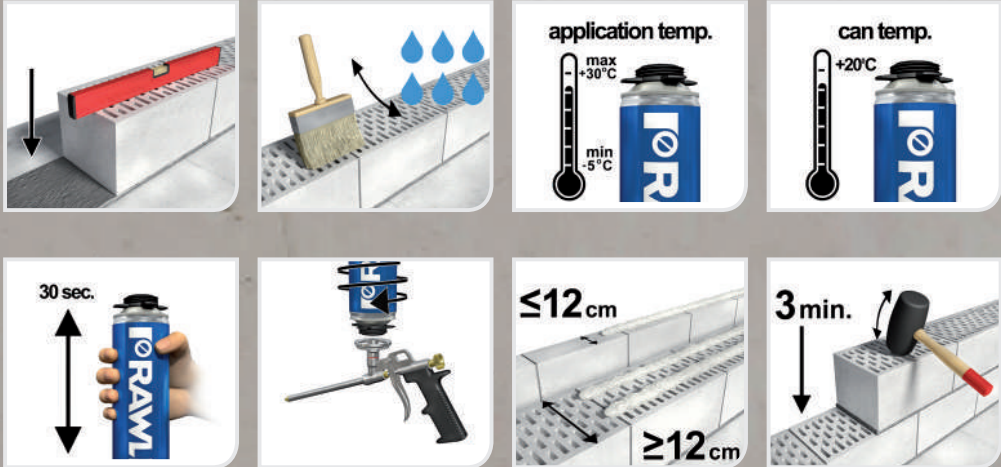
R-RPP Mortar

THIN BED MORTAR PU NEW POLYURETHANE MORTAR

Wide array of advantages

Installation and application:

Product Information Installation



1. The working surfaces must be free of dust, debris and other materials that would impair the bond strength. Moisten the working surface with water, using a brush or spray. Polyurethane mortar should be protected on surfaces which may become dirty.
 2. Optimal can temperature is +20°C. A cold can should be warmed or kept at room temperature for a minimum of 24 hours before application.
 3. Wear protective gloves.
 4. Attach gun applicator and shake can vigorously for 30 seconds.
 5. Working position is always upside down.
 6. Apply the mortar:
 - one bead in the middle of the block with a width of 12 cm
 - two parallel beads for blocks with a width exceeding 12 cm
 7. Apply the mortar on the long side of the block keeping 3 cm distance from the side edge of the block forming:
 - bead with required diameter 3 cm for aerated concrete blocks
 - bead with required diameter 5 cm for hollow ceramic and silicate blocks
 8. Blocks should be put on applied mortar up to 3 min after mortar application.
 9. The block with the mortar should be pressed slightly in order to obtain a thin slit evenly spread on the block surface.
 10. To achieve the desired accuracy, the blocks should be levelled.
- Blocks can be horizontally corrected within 3 minutes by up to 0.5 cm without detaching them from the wall.**
Stabilise the blocks with a rubber hammer.

Mortar yield from one 750 ml can

The width of the masonry block	Recommended number of beads	Application of Horizontal [m²]	Application vertically and horizontally [m²]
≤ 12 cm	1	10-12	5-8
≥ 12 cm	2	5-8	3-4

Material	Type of application /number of beads	Application of Horizontal [m²]	Application vertically and horizontally [m²]
Aerated Concrete Block	block up to 12 cm width/1	10	8
	block over 12 cm width/2	4,8	3
Ceramic Hollow Block	block up to 12 cm width/1	10 - 12	7 - 8
	block over 12 cm width/2	5 - 6	3 - 4
Silicate Blocks	block up to 12 cm width/1	10	6 - 7
	block over 12 cm width/2	5,2	3,2

2h - EXPRESS
Application

EASY
applications

12m²
EFFECTIVE
12 m² wall from one can

Saves
TIME & MONEY

λ ≤ 0,036
ELIMINATES
Thermal bridges

EXTENDS
building season